

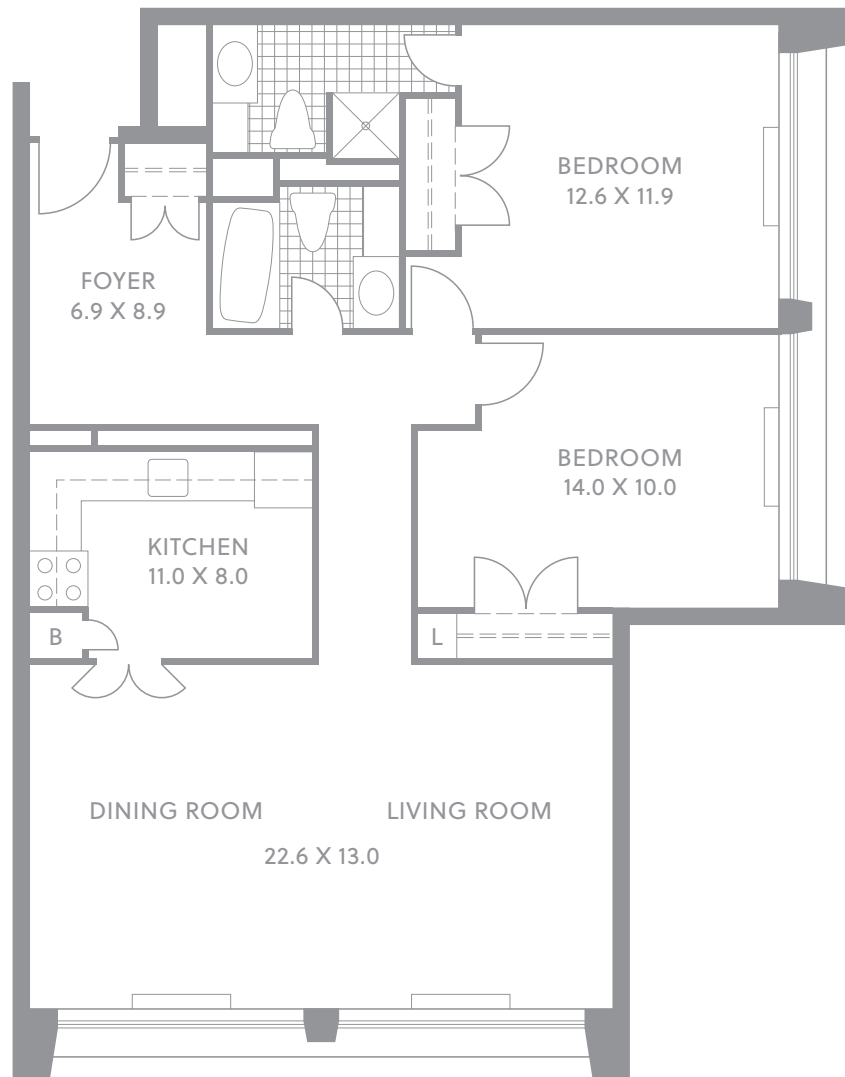
Two Bedroom

993 sq. ft.

Lowrise, South & East Facing

Bright and spacious, with hardwood floors and white kitchen cabinets, our unfurnished apartments on floors 3 to 29 are waiting for you to add the personal touches of home. These apartments have utilities and cable included, plus you'll have access to many of our great amenities including the urban garden, party room and club room.

All dimensions are approximate.



RENTAL INFORMATION
Stella Gomes or Michael Gula
P: 416 961 4998 F: 416 923 7637
E: livemanulifecentre@manulife.com

**TENANT SERVICES, MAINTENANCE,
CONCIERGE OR PROPERTY MANAGEMENT**
P: 416 961 4998 F: 416 923 7637

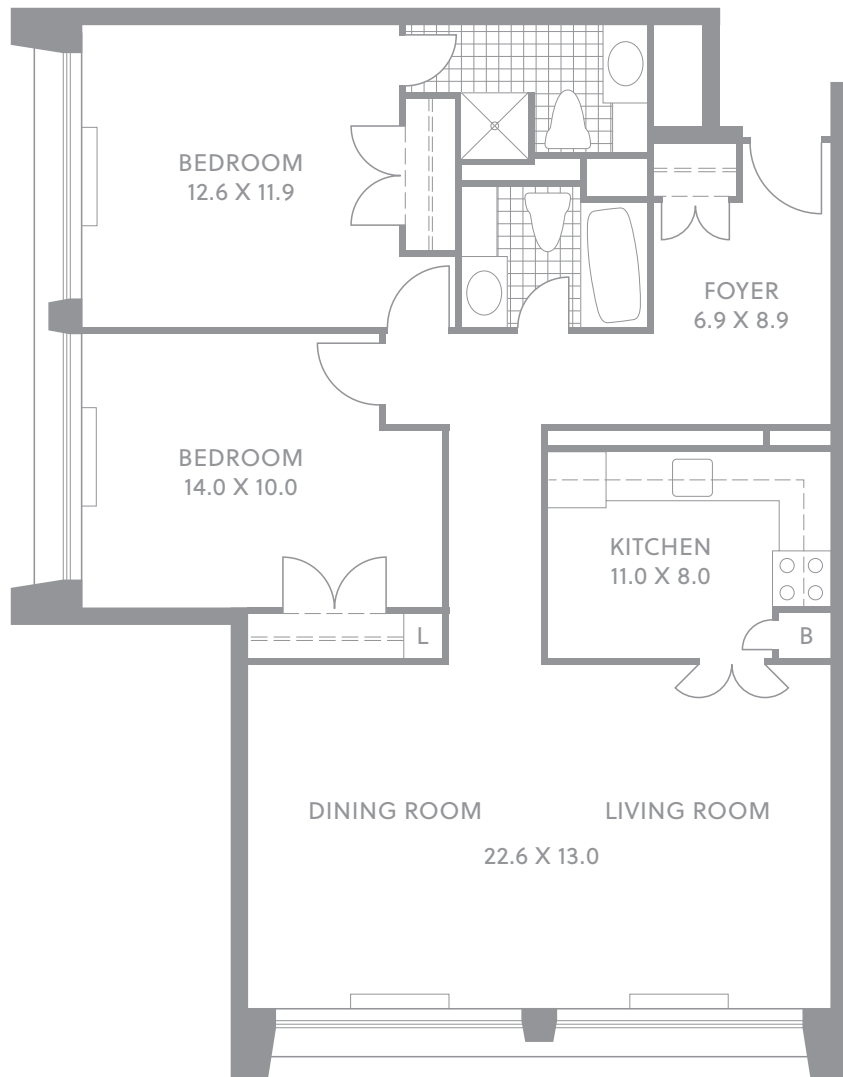
Two Bedroom

999 sq. ft.

Lowrise, South & West Facing

Bright and spacious, with hardwood floors and white kitchen cabinets, our unfurnished apartments on floors 3 to 29 are waiting for you to add the personal touches of home. These apartments have utilities and cable included, plus you'll have access to many of our great amenities including the urban garden, party room and club room.

All dimensions are approximate.



RENTAL INFORMATION

Stella Gomes or Michael Gula
P: 416 961 4998 F: 416 923 7637
E: livemanulifecentre@manulife.com

TENANT SERVICES, MAINTENANCE, CONCIERGE OR PROPERTY MANAGEMENT

P: 416 961 4998 F: 416 923 7637